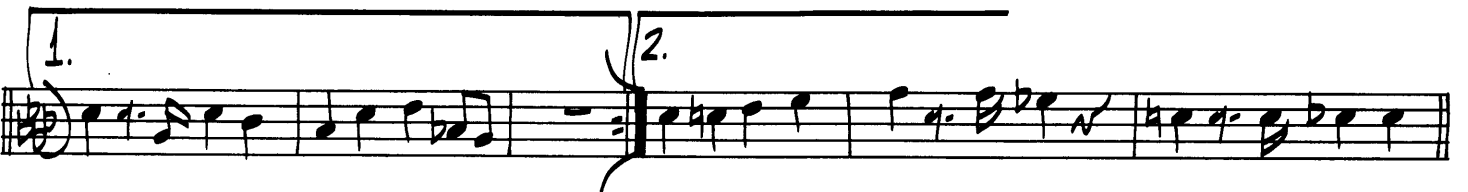
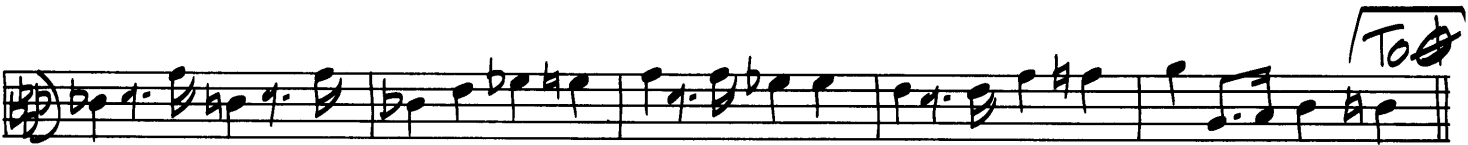
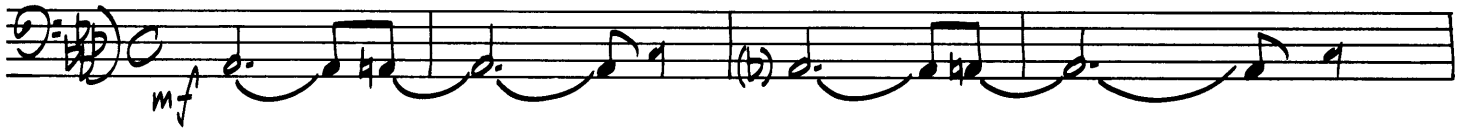


Blues At First Sight

by RALPH GINGERY

MEDIUM BLUES



Handwritten musical notation on a single staff. The key signature is B-flat major (two flats). The notation includes a circled 'C' above the staff, indicating a C-section. Chords are written above the staff: A-flat 7 (A^b7) and another A-flat 7 (A^b7). The melody consists of eighth and quarter notes.

Handwritten musical notation on a single staff. The key signature is B-flat major. Chords written above the staff include: D-flat 7 (D^b7), A-flat 7 (A^b7), G7, G-flat 7 (G^b7), F7, and B-flat minor 7 (B^bm7). The melody continues with eighth and quarter notes.

Handwritten musical notation on a single staff. The key signature is B-flat major. Chords written above the staff include: E-flat 7 (E^b7), A-flat (A^b), B-flat 9 (B^b9), B-flat 9 (B^b9), and A-flat 7 (A^b7). A circled 'D' is written above the staff, indicating a D-section. The notation includes a double bar line and a repeat sign. The melody consists of eighth and quarter notes.

Handwritten musical notation on a single staff. The key signature is B-flat major. The notation includes a double bar line and a repeat sign. The melody consists of eighth and quarter notes.

Handwritten musical notation on a single staff. The key signature is B-flat major. The notation includes a double bar line and a repeat sign. The text "D.S. Al CODA" is written to the right of the staff.

CODA

Handwritten musical notation on a single staff. The key signature is B-flat major. The notation includes a double bar line and a repeat sign. The melody consists of eighth and quarter notes.

Handwritten musical notation on a single staff. The key signature is B-flat major. The notation includes a double bar line and a repeat sign. The melody consists of eighth and quarter notes.