

SIERRA MUSIC PRESENTS
THE MUSIC OF RADIOHEAD

EVERYTHING IN ITS RIGHT PLACE

COMMISSIONED BY PAUL LUCCRESI AND THE BUCHANAN HS JAZZ BAND A

GUITAR

♩ = 138 MEDIUM STRAIGHT 8s, YORKE-LIKE

COMPOSED BY YORKE, SELWAY, O'BRIEN,
GREENWOOD & GREENWOOD (RADIOHEAD)
ARRANGED BY JAMES MILEY

FOUR TIMES ENTER 3RD TIME

mp

4 PLAY 3 TIMES

12 PLAY 3 TIMES

mp

20 PLAY 3 TIMES

BUILD TO MEASURE 28

28

PLAY 2 TIMES

36 PLAY 2 TIMES

42

PLAY 2 TIMES

54

(TENOR SOLO) FEEL HALF-TIME AT FIRST, THEN BUILD INTO REPEAT

BACKGROUNDS 2ND TIME ONLY

62 G#07/A

G#m7/A

A7

70 F#m7/A

A sus

A7(b9)
A7(b13)

78

D mi 11 C/E

F#m7 D#m7+11

Musical staff with notes and chords: $\text{D}^{\flat}\text{m}^{\flat}\text{9}^{\flat}+\text{11}$ $\text{E}^{\flat}\text{6}^{\flat}\%$ C

Musical staff with notes and chords: $\text{D}^{\flat}\text{m}^{\flat}\text{9}^{\flat}+\text{11}$ $\text{E}^{\flat}\text{6}^{\flat}\%$ C 114

Musical staff with notes and chords: $\text{D}^{\flat}\text{m}^{\flat}\text{9}^{\flat}+\text{11}$ $\text{E}^{\flat}\text{6}^{\flat}\%$ C

Musical staff with notes and chords: $\text{D}^{\flat}\text{m}^{\flat}\text{9}^{\flat}+\text{11}$ $\text{E}^{\flat}\text{6}^{\flat}\%$ C 106

Musical staff with notes and chords: $\text{D}^{\flat}\text{m}^{\flat}\text{9}^{\flat}+\text{11}$ $\text{F}^{\flat}\text{m}^{\flat}\text{7}$ C/E

Musical staff with notes and chords: $\text{G}^{\flat}\text{m}^{\flat}\text{7}/\text{A}$ $\text{A}7$ 96 $\text{F}^{\flat}\text{m}^{\flat}\text{7}/\text{A}$ $\text{A}^{\flat}\text{sus}$ $\text{A}7(\text{b}9)/(\text{b}13)$

Musical staff with notes and chords: $\text{A}^{\flat}\text{m}^{\flat}\text{7}$ 88 $\text{F}^{\flat}\text{m}^{\flat}\text{7}/\text{A}$ $\text{G}^{\flat}\text{7}/\text{A}$

Musical staff with notes and chords: $\text{D}^{\flat}\text{m}^{\flat}\text{9}^{\flat}+\text{11}$ $\text{E}^{\flat}\text{6}^{\flat}\%$ F G $\text{C}7\text{add}11$

SUDDENLY LIGHTER

122

E \flat m11

D m11

130

F \sharp m11

E \flat m11

138

D/E \flat

E m11

148

PLAY 2 TIMES

150 PLAY 2 TIMES

162 PLAY 3 TIMES



171 FOUR TIMES

173 PLAY 3 TIMES



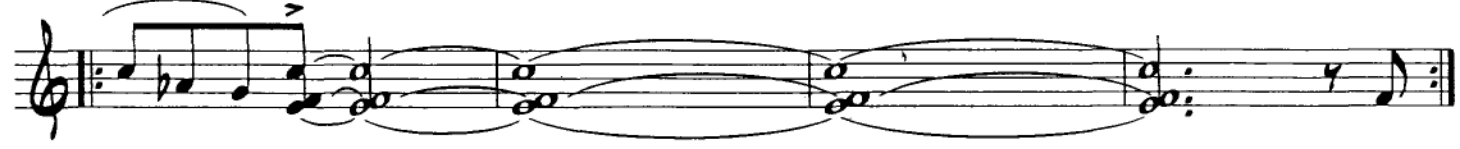
181



187



191 199 PLAY 3 TIMES



204

ON CUE

