

BASIN STREET BARBEQUE

BASS

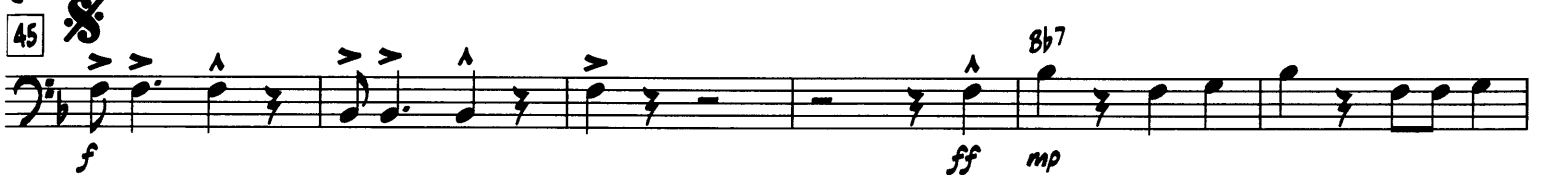
HOWARD ROWE

RELAXED NAWLINS 2ND LINE SWING (♩ = 88)

025-3734-00



(OPT.)



BASS

SWING OPEN FOR SOLOS. PLAY BACKGROUNDS ON CUE

57 F^9 Bb^9
mp

Musical staff for measure 57, bass clef, 2/4 time. Chords F^9 and Bb^9 are indicated above the staff. The dynamic marking *mp* is below the staff.

F^9 C^9 F^9 C^9 OPT. D.S. FOR MORE SOLOS

Musical staff for measures 58-60, bass clef, 2/4 time. Chords F^9 , C^9 , F^9 , and C^9 are indicated above the staff. The instruction "OPT. D.S. FOR MORE SOLOS" is written above the staff.

69 *ff* *f*

Musical staff for measure 69, bass clef, 2/4 time. The dynamic marking *ff* is below the staff, and *f* is below the staff at the end of the measure.

Musical staff for measure 70, bass clef, 2/4 time.

81 *ff* *cresc.*

Musical staff for measure 81, bass clef, 2/4 time. The dynamic marking *ff* is below the staff, and *cresc.* is written below the staff.

Musical staff for measure 82, bass clef, 2/4 time.

89 DRUM BREAK 4

Musical staff for measure 89, bass clef, 2/4 time. The instruction "DRUM BREAK 4" is written above the staff, with a thick horizontal line below the staff.

93 BIG BACK BEAT *ff*

Musical staff for measure 93, bass clef, 2/4 time. The instruction "BIG BACK BEAT" is written above the staff, and the dynamic marking *ff* is below the staff.

Musical staff for measure 94, bass clef, 2/4 time.