

Natural Minor Scales

(Bass Clef)

C minor - Relative Major Eb

W H W W H W W

6 G minor - Relative Major Bb

11 D minor - Relative Major F

16 A minor - Relative Major C

21 E minor - Relative Major G

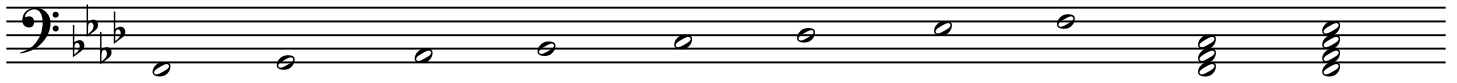
26 B minor - Relative Major D

31 F# minor - Relative Major A

36 C# minor - Relative Major E

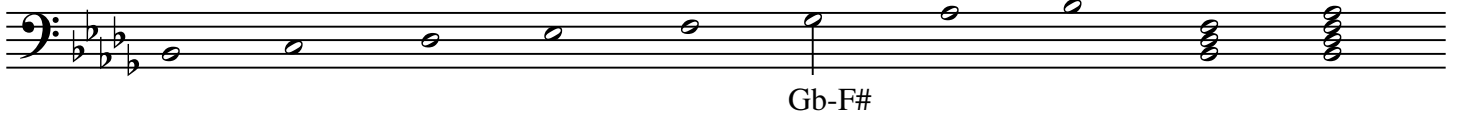
41 F minor - Relative Major Ab

F min F min7



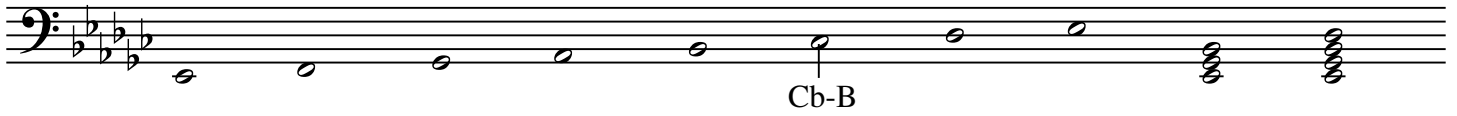
46 Bb minor - Relative Major Db

Bb min Bb min7



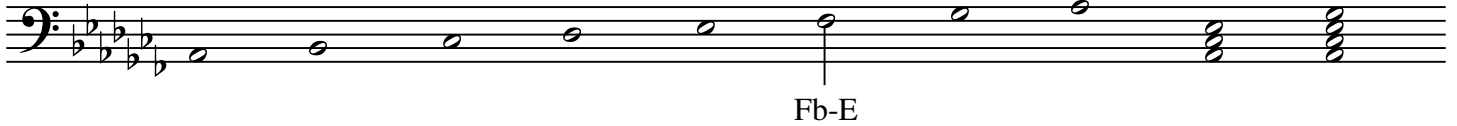
51 Eb minor - Relative Major Gb

Eb min Eb min7



56 Ab minor - Relative Major Cb

Ab min Ab min7



Practice scales two octaves if possible. If not play an octave and a fifth (up to fifth note of scale.)

Scales can be practiced in order on page or ideally in chromatic order (example:C minor, C# minor, D minor...)

Play scales with even tempo with quarter or eighth note value.