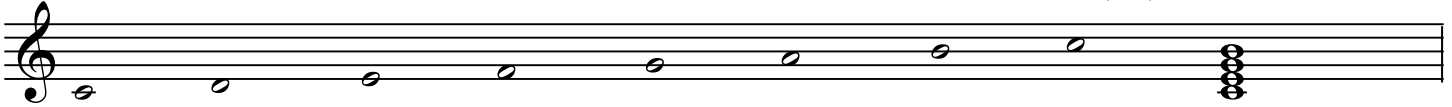


Concert Jazz Band Scale Syllabus

All scales are to be played 1 octave. Extra credit is given if scales are memorized. Students are expected to perform scales from previous semesters every jury.

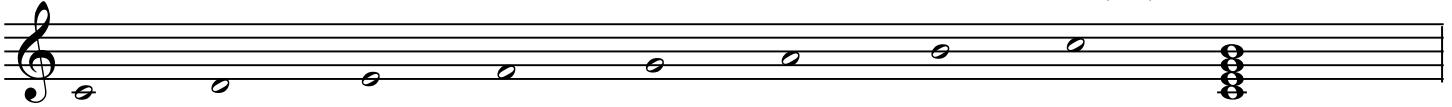
Semester 1: Major Scale

Concert: Db, Ab, Eb, Bb, F, C, G



Semester 2: Major Scale

Concert: D, A, E, B, F# (Gb)



Semester 3: Dominant 7 (Mixolydian)

Concert: Db, Ab, Eb, Bb, F, C, G



Semester 4: Dominant 7 (Mixolydian)

Concert: D, A, E, B, F# (Gb)



D7

Semester 5: Natural Minor (Aeolian)

Concert: Eb, Bb, F, C, G, D, A



-3

Semester 6: Natural Minor (Aeolian)

Concert: E, B, F#(Gb), Db(C#), Ab



-6

D7

Semester 7: Harmonic Minor

Concert: Eb, Bb, F, C, G, D, A



-3

Semester 8: Harmonic Minor

Concert: E, B, F#(Gb), Db(C#), Ab



-6

M7