

Jazz Band Syllabus

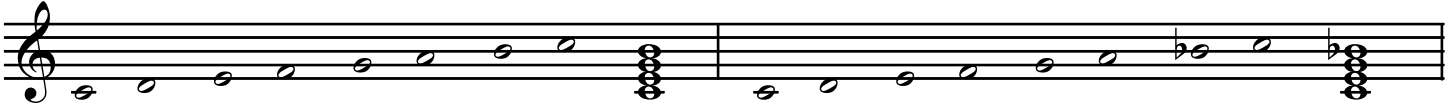
All scales are to be played 2 octaves or octave and a fifth due to instrument's limitations.
Students should practice scales in chromatic order to prepare for Juries (example: C major, C#, D, Eb...).
Students are expected to perform scales in all twelve keys. Scales should be memorized!!

Semester 1: Major Scale (Ionian Mode)

C, C Maj, CM, CMaj7, C6, C

Semester 2: Dominant 7 Scale (Mixolydian Mode)

C7, C9



Built of 5th degree of Major Scale

Semester 3: Minor 7 Scale (Dorian Mode)

Cmin, Cmin6, Cmin7, C-, C-7, C-6

Semester 4: Minor 7 Scale (Aeolian Mode)

Cmin, Cmin6, Cmin7, C-, C-7, C-(b6)



Built on the 2nd degree of the Major Scale

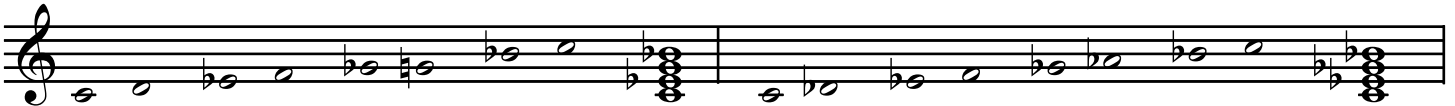
Built on the 6th degree of the Major Scale

Semester 5: Minor Blues Scale

Cmin7, C7(+9)

Semester 6: Minor 7(b5) Scale (Locrian Mode)

Cmin7(b5), C-7(b5), Cø



Built on the 7th degree of the Major Scale

Semester 7: Lydian Mode

CMaj7, CMaj7(b5)

Semester 8: Symmetrical Dominant Mode

C7, C7(b5), C7(b9), C7(+9)



Built on the 4th degree of the Major Scale